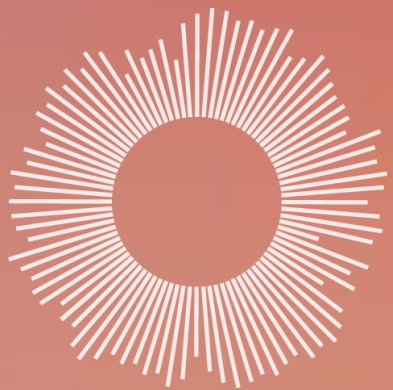


Leadership for Sustainable Health:

Everyone can make a difference!

Hospitals become leaders for sustainability in their communities ”

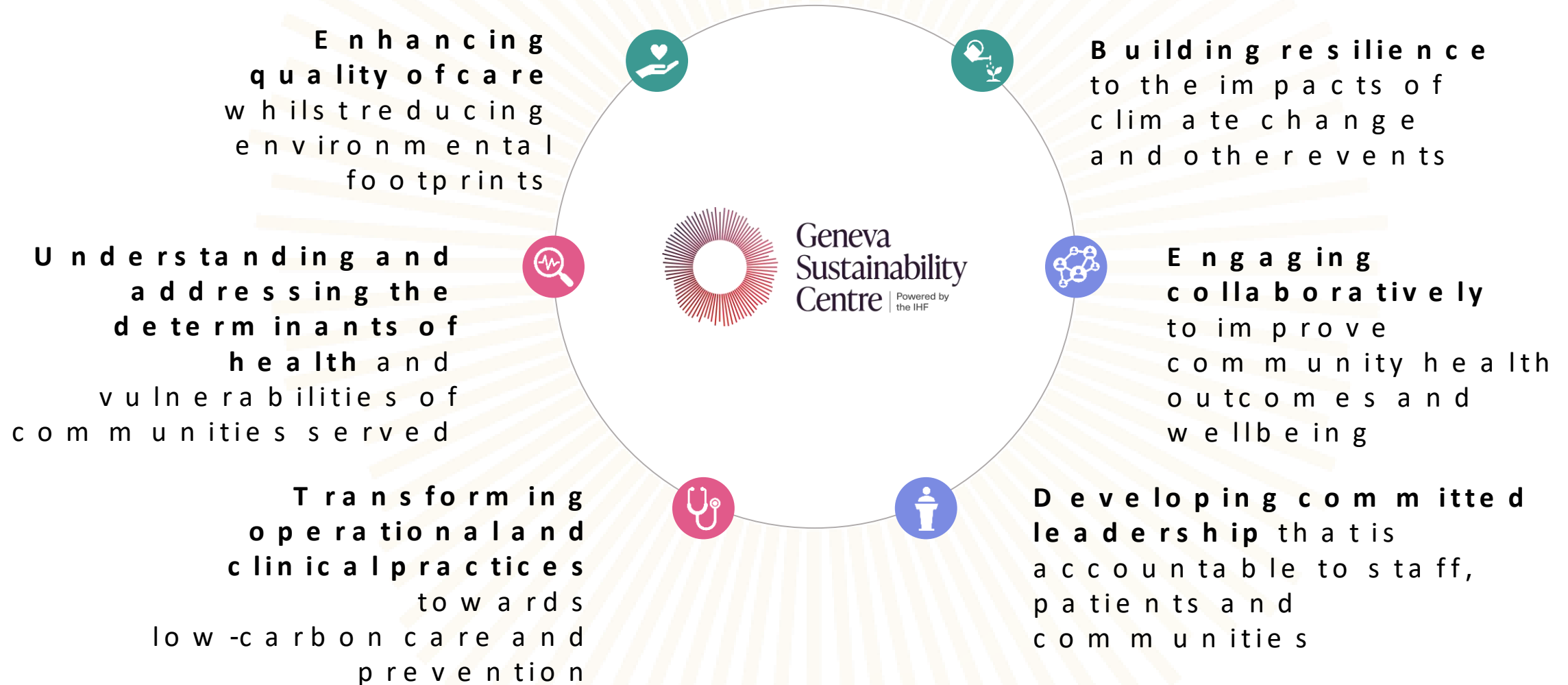
W h a t i s i t
f o r y o u ?

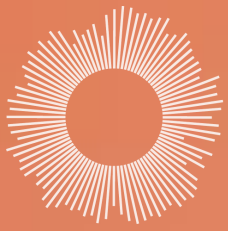




Addressing climate change as an integral part of healthcare delivery

Low carbon, equitable and resilient healthcare





World Health
Organization

Health Topics ▾

Countries ▾

News ▾

Emerge

Health benefits far outweigh the costs of meeting climate change goals

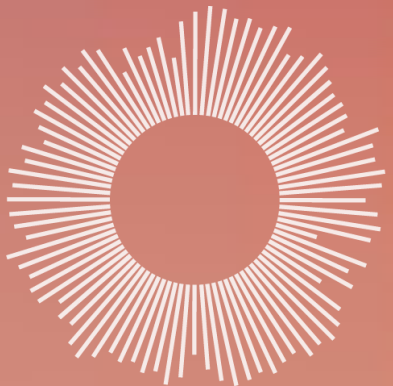
5 December 2018 | News Release | Katowice, Poland

“The health burden of polluting energy sources is now so high, that moving to cleaner and more sustainable choices for energy supply, transport and food systems effectively pays for itself,” says Dr Maria Neira, WHO Director of Public Health, Environmental and Social Determinants of Health.

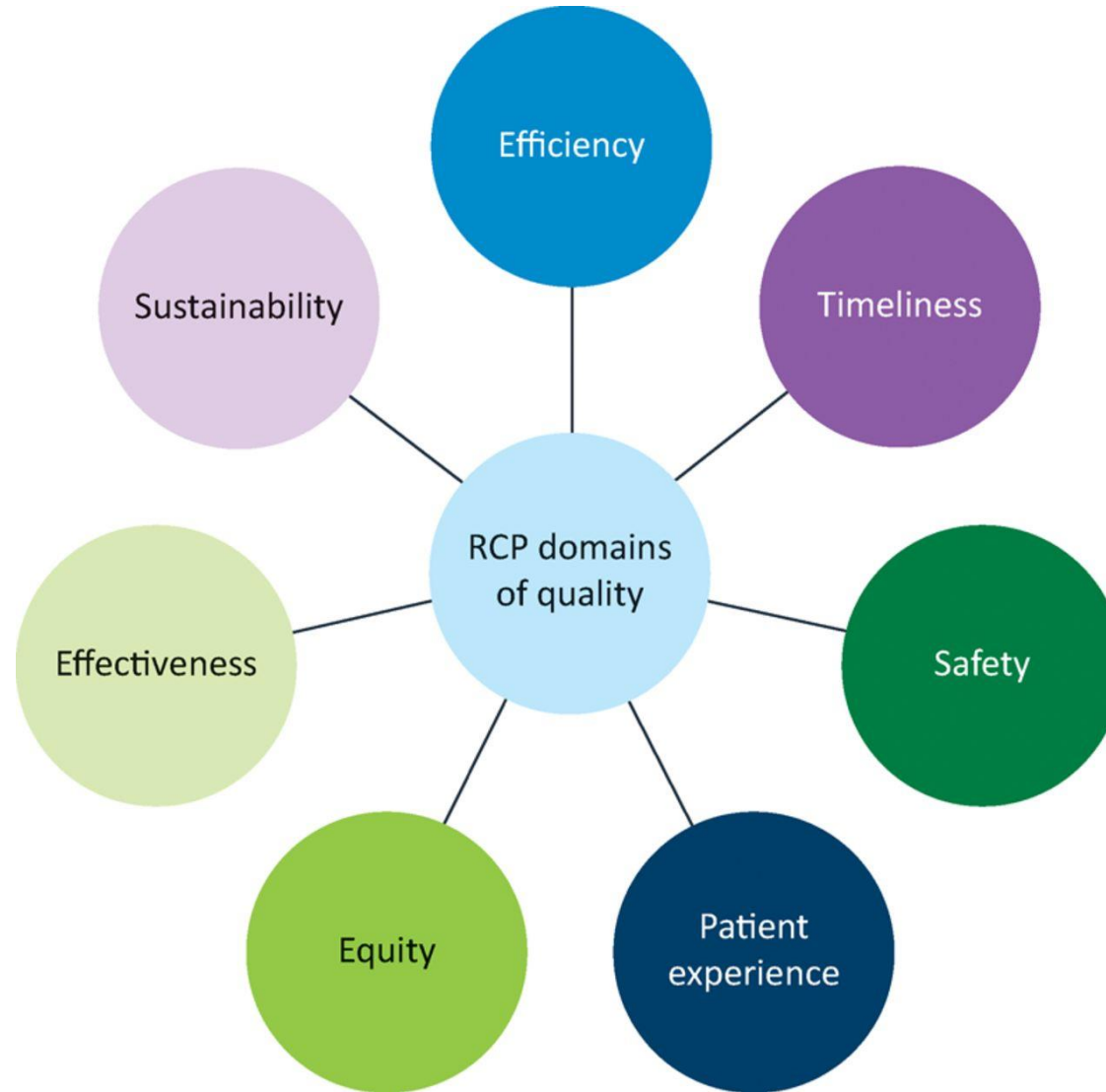
“When health is taken into account, climate change mitigation is an opportunity, not a cost.”

<https://www.who.int/news/item/05-12-2018-health-benefits-far-outweigh-the-costs>

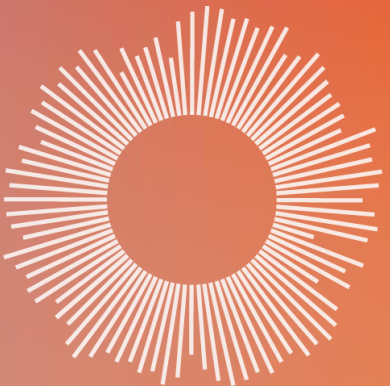
W h a t i s
s u s t a i n a
b l e
c l i n i c a l
c a r e ?



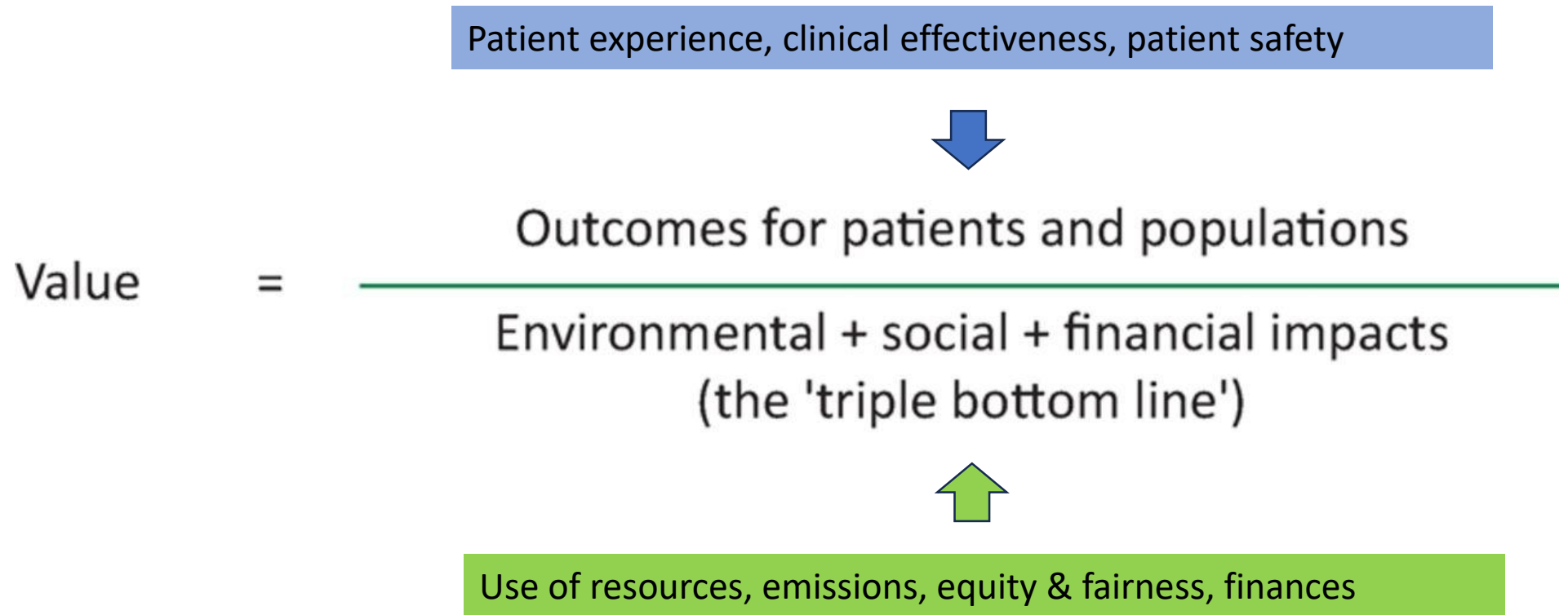
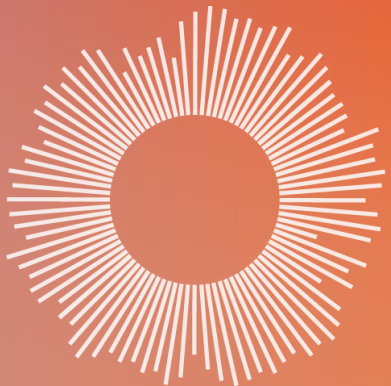
Quality of care



Domains of quality (adapted by the Royal College of Physicians from the Institute of Medicine).¹

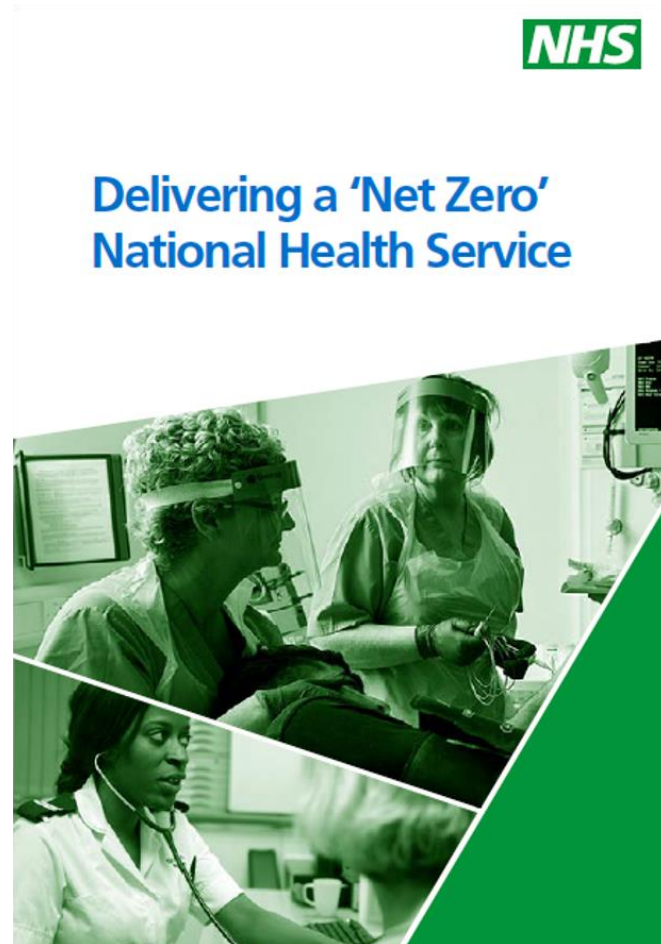


Value of Care

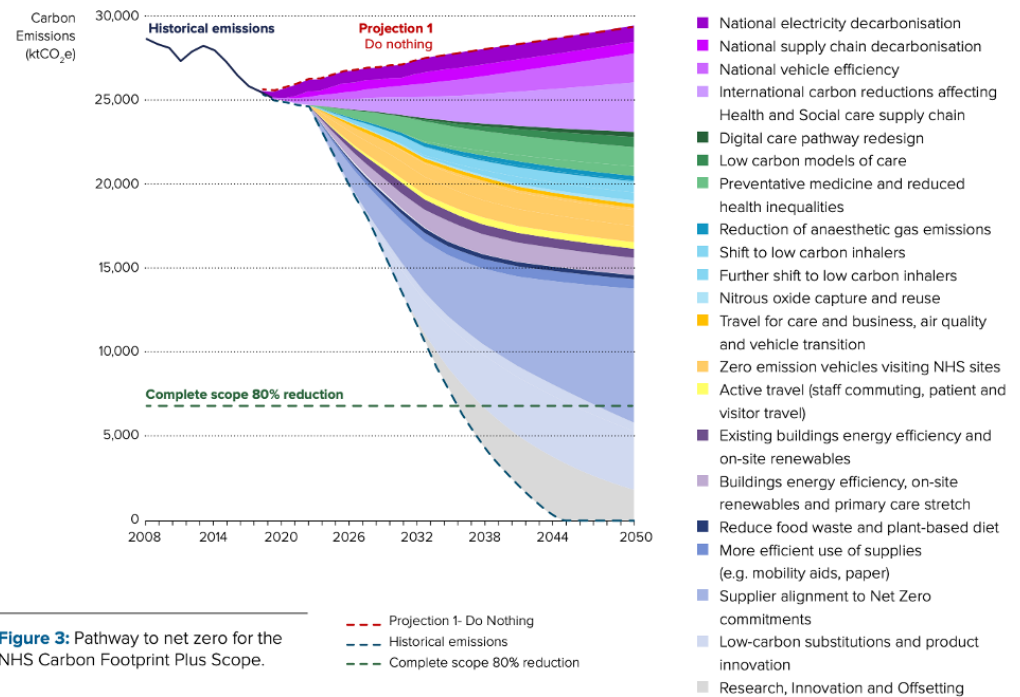


Case study: demonstrating the plan

NHS, Net Zero Plan, England

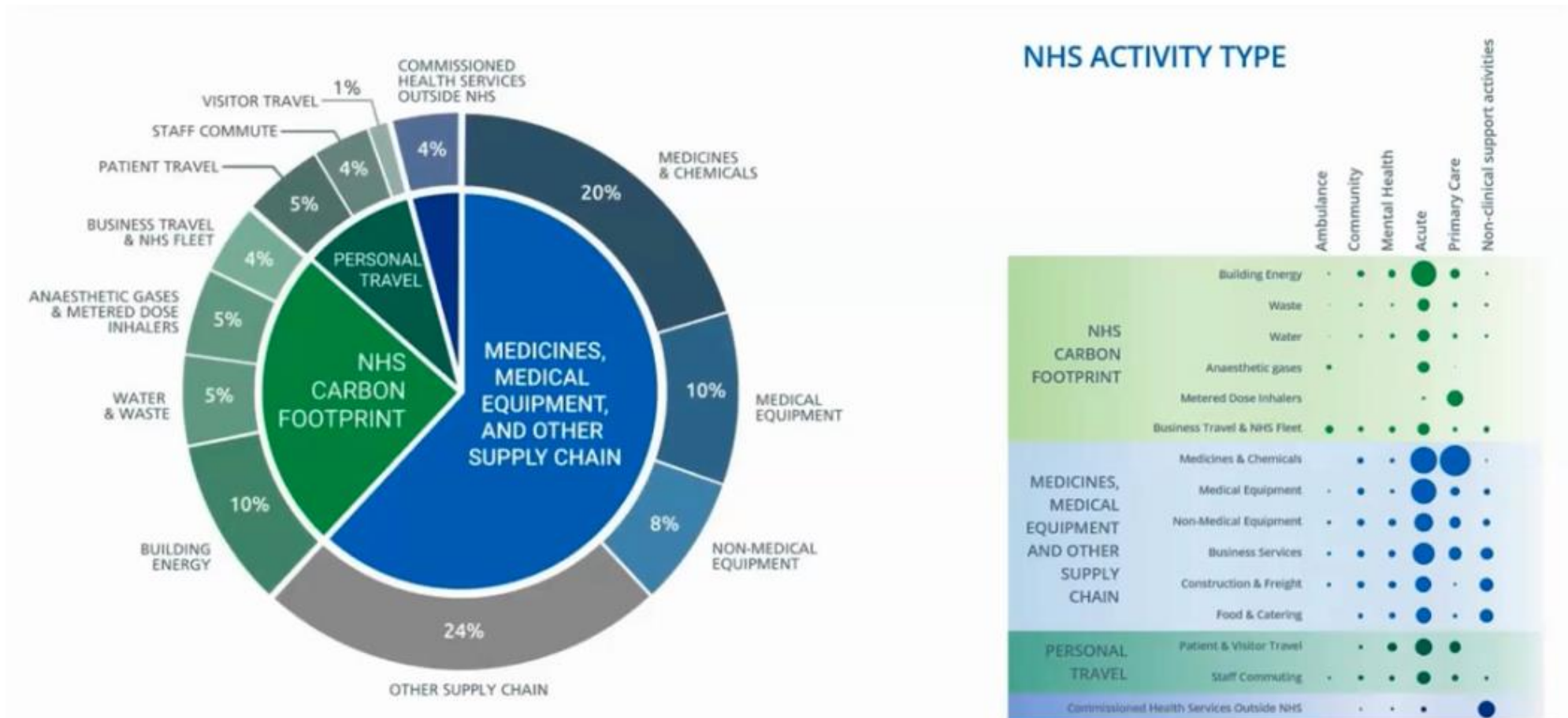


NHS England Roadmap to Zero emissions⁴

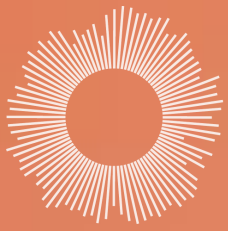


Case study: breakdown of emissions

NHS, Net Zero Plan, England



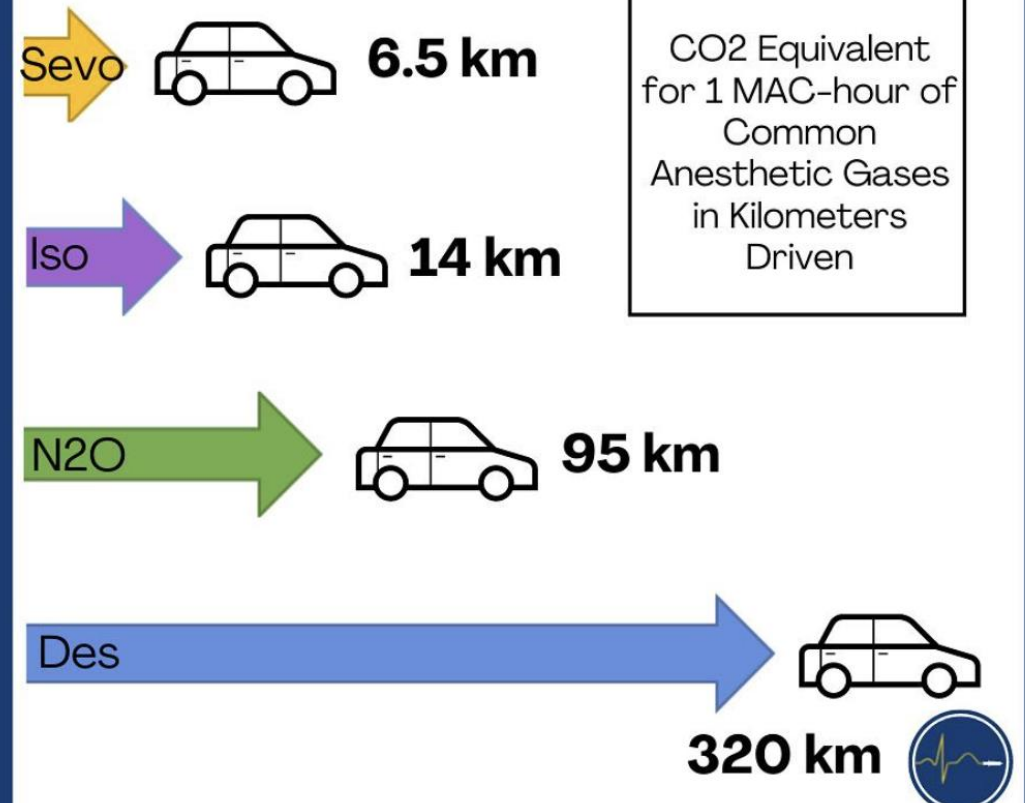
Gases: from Anaesthetic gases, to inhalers and HVACs

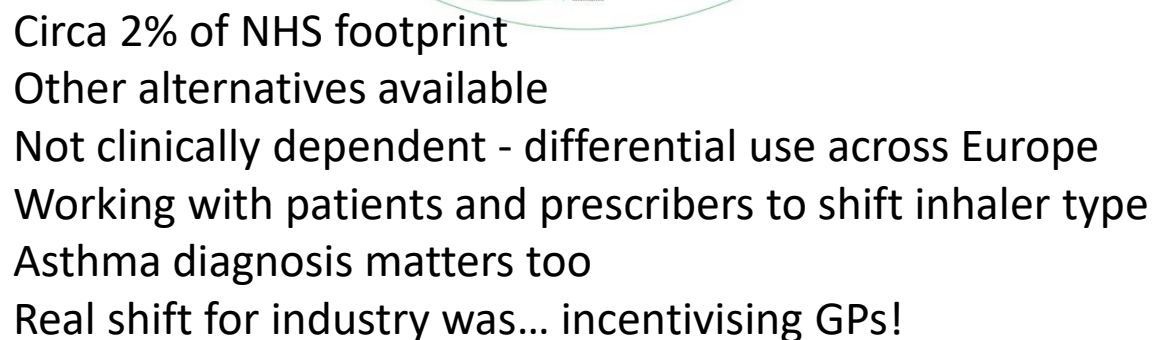


- Gas flow
- Alternatives to gases
- Midwifery/Emergency care/
operating theatres/ambulances

[Download the anaesthetic
gases calculator](#)

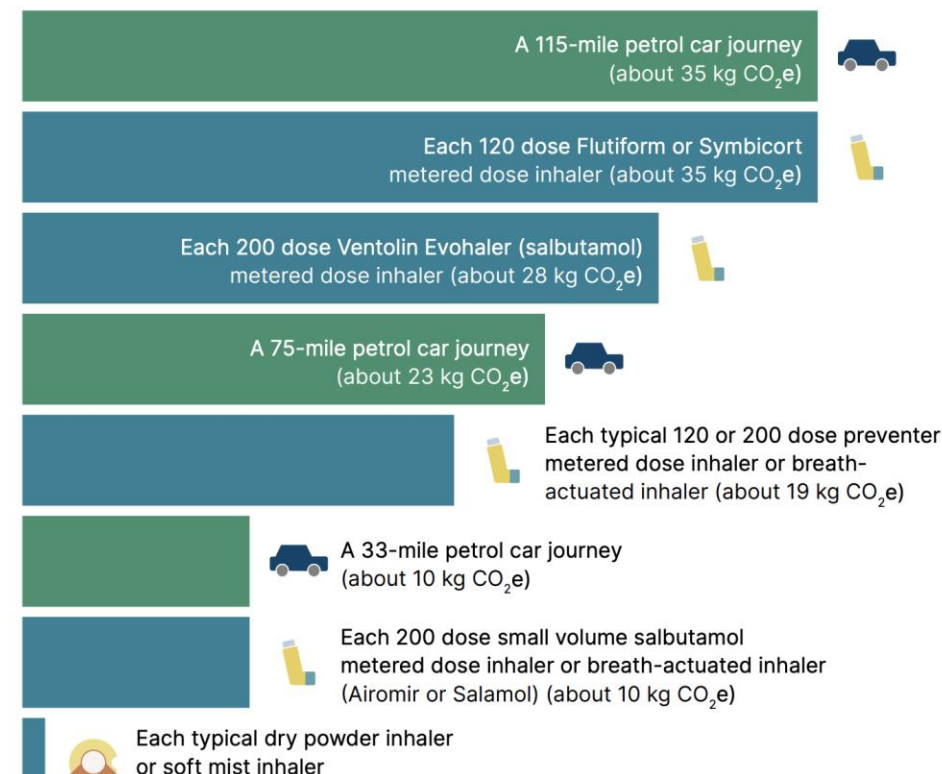
Anesthetic Gases and their Environmental Impact



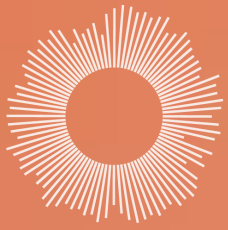


The chart below compares the carbon footprints of different types of inhaler. It shows the carbon dioxide equivalent (CO₂e) in kilograms (kg). This is the way that the carbon footprint of things is usually compared. The higher the CO₂e the bigger the effect on the climate. The chart also shows how different inhaler types measure up against some petrol car journeys, so you can get an idea of how big an impact they have.

The Ventolin Evohaler brand of salbutamol contains more propellant (gas) per puff than other salbutamol metered dose inhalers. Flutiform and Symbicort metered dose inhalers contain a type of propellant that has a more powerful greenhouse effect than other metered dose inhalers that contain similar medicines. Dry powder inhalers do not contain propellant.

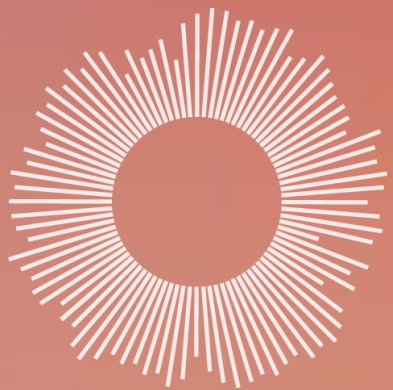


Gloves and behaviour change

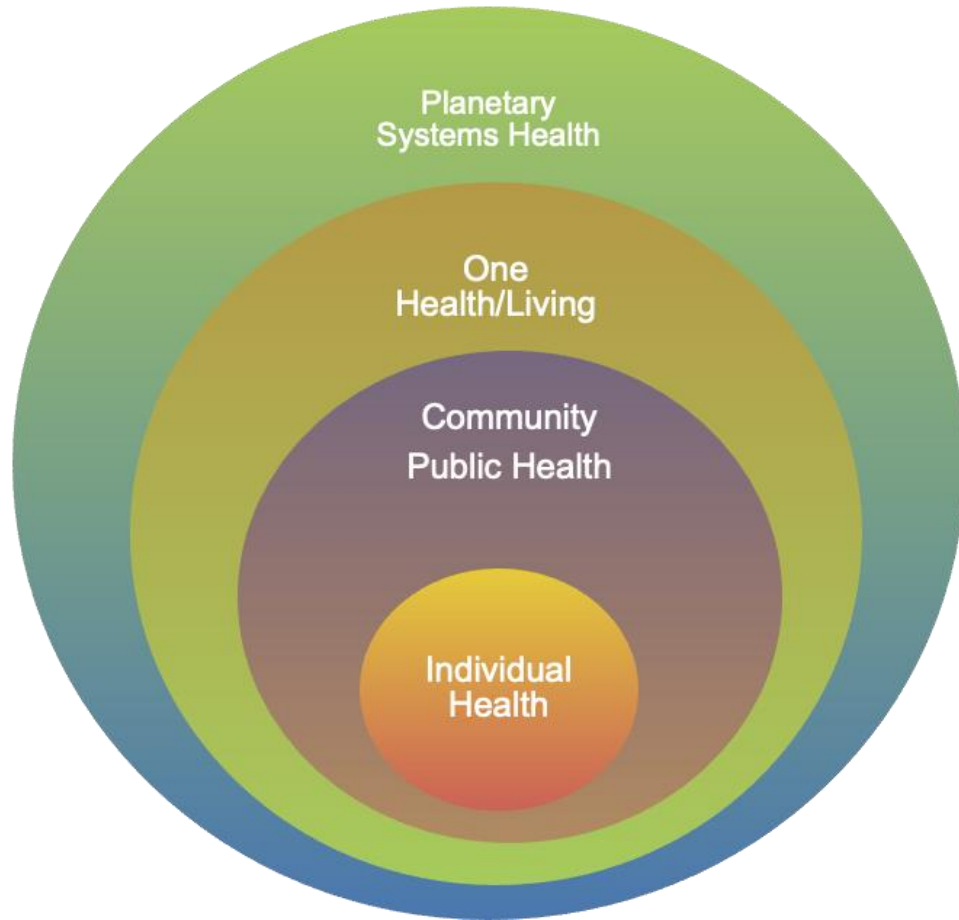
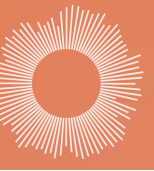


- <https://www.england.nhs.uk/greenernhs/whats-already-happening/great-ormond-street-hospital-reducing-single-use-plastics-case-study/>
- Why is this case study so key?

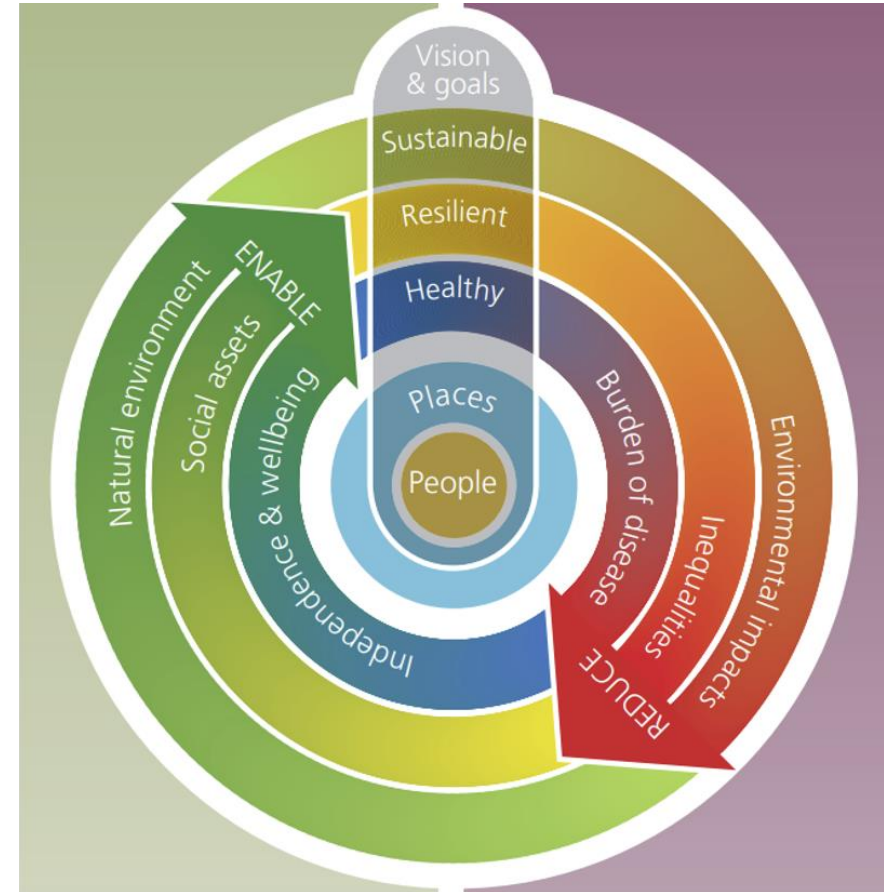
R o u t e s
to
c h a n g e ?



Planetary and Health Systems

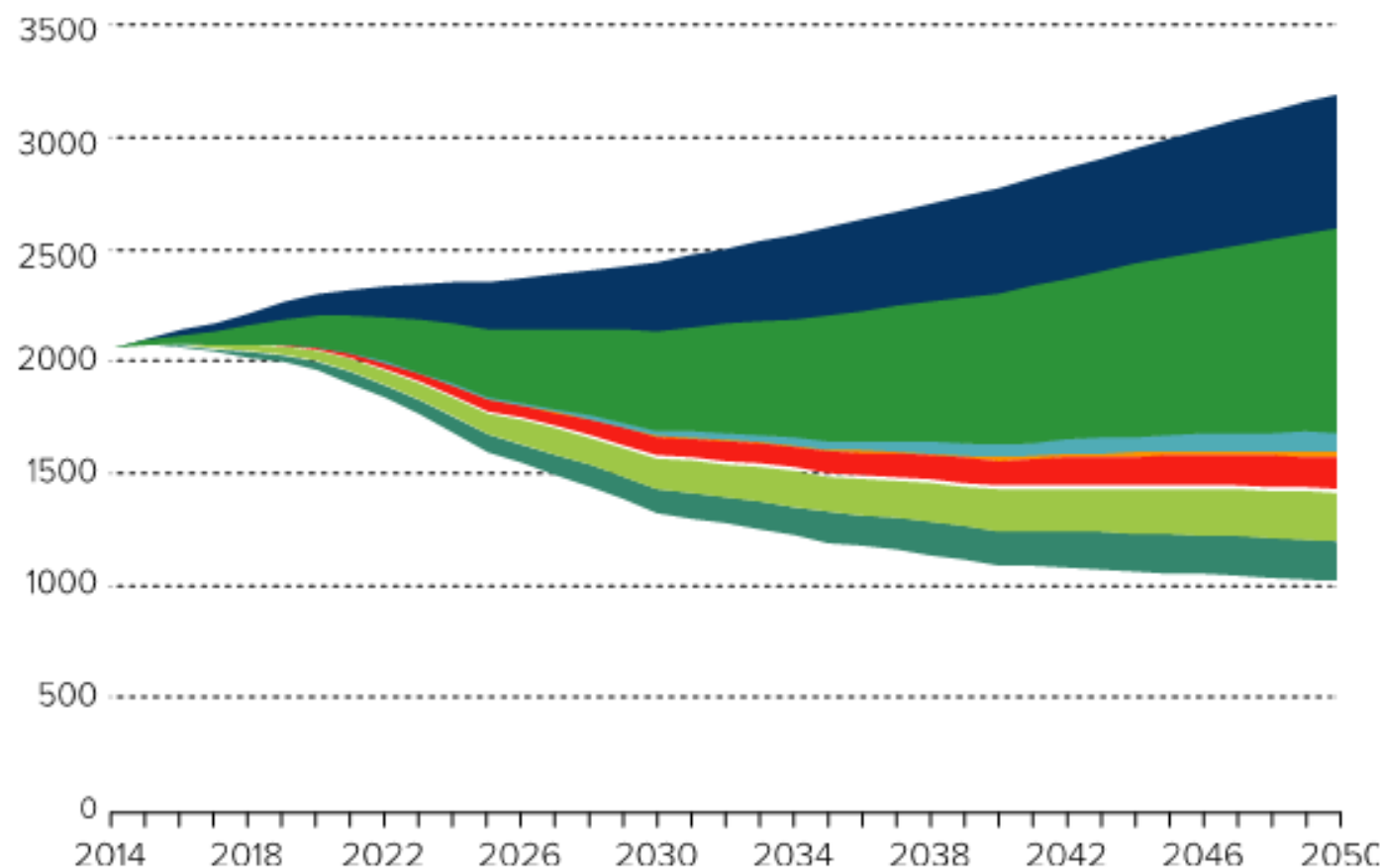
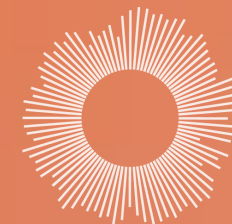


Derived from Forbes 2021:
What is Planetary Health?



NHS Sustainable Development Unit 2015:
Sustainable Development Strategy

Global Road Map to zero: High-impact actions



1. Power health care with 100% clean, renewable electricity



2. Invest in zero emissions buildings and infrastructure



3. Transition to zero emissions, sustainable travel, and transport



4. Provide healthy, sustainably grown food and support climate-resilient agriculture



5. Incentivize and produce low-carbon pharmaceuticals



6. Implement circular health care and sustainable health care waste management



7. Establish greater health system effectiveness

5 GUIDING
PRINCIPLES FOR
Sustainable
OCCUPATIONAL
THERAPY
PRACTICE



Summarised from WFOT (2018) Sustainability Matters, Guiding principles for Sustainable Occupational Therapy Practice

Sustainable QI

EARLY MOBILISATION IN CARDIAC INTENSIVE CARE

This pioneering project in a Southampton Cardiac Intensive Care Unit (CICU) aimed to improve both patient and service outcomes



Reduced ventilation days by 4 days
Reduced overall cardiac intensive care stay by 6 days



Total savings of £1,266,327 over 2 years



Total savings of 48.5 tonnes CO2e over 2 years

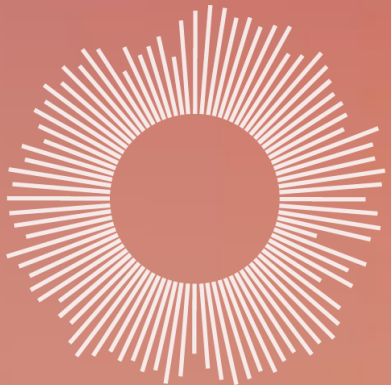


More rapid recovery, quicker discharge & return to ADLs
Patients having more autonomy during their hospital stay
Increased staff satisfaction



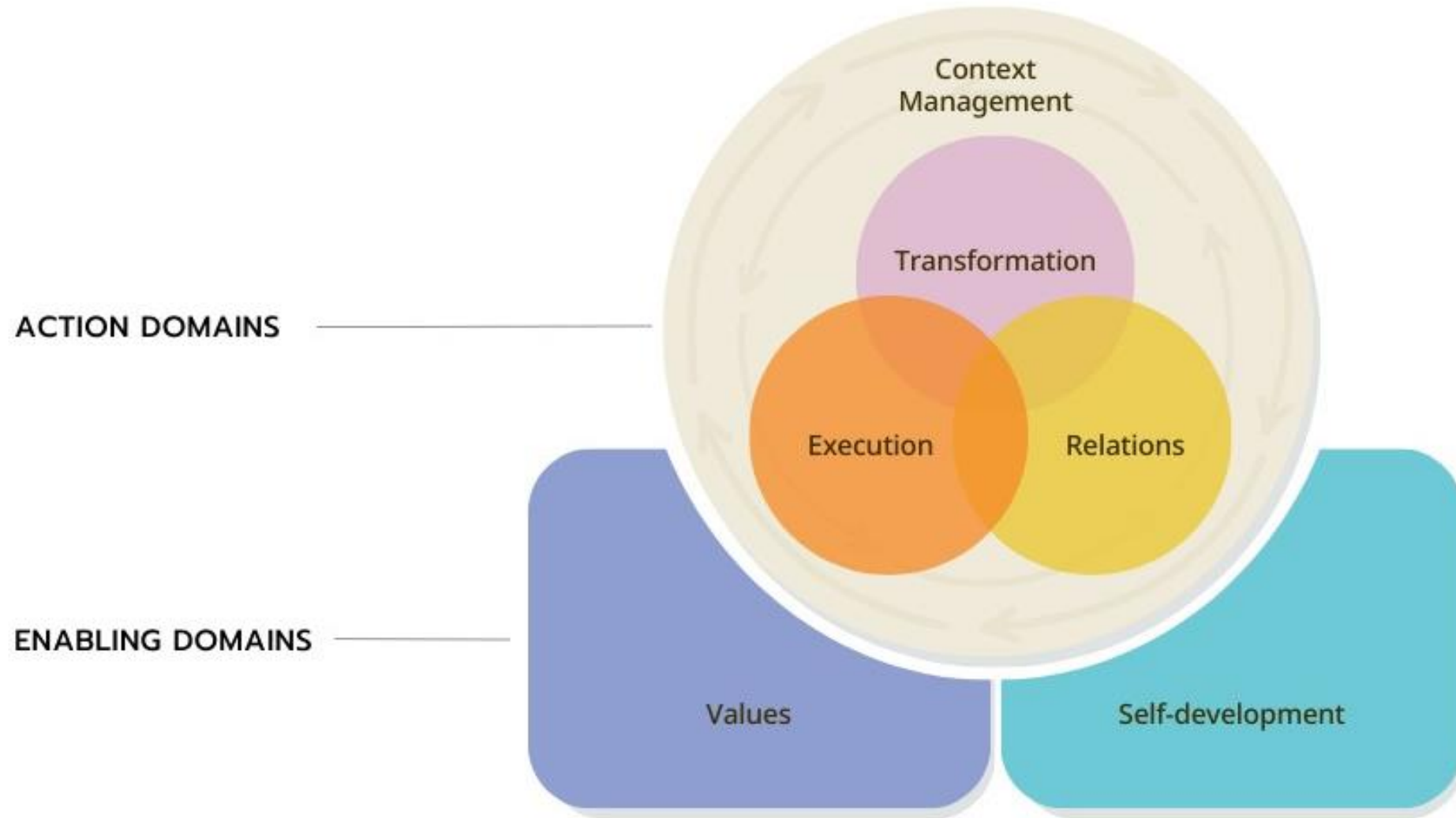
Read the report, [here](#).

S u s t a i n a
b l e
H e a l t h
a s a
c o m p e t e
n c y



IHF Leadership Model

Transforming healthcare management



Newly identified competencies

*S e l f - d e v e l o p m e n t d o m a i n
(2):*

- E m o t i o n a l i n t e l l i g e n c e

E x e c u t i o n d o m a i n (1 1):

- T r a n s l a t i o n a n d
i m p l e m e n t a t i o n
- P r e p a r e d n e s s a n d c r i s i s
m a n a g e m e n t
- D i g i t a l t e c h n o l o g i e s i n
h e a l t h c a r e

R e l a t i o n s d o m a i n (4):

- C o m p a s s i o n a t e
l e a d e r s h i p

T r a n s f o r m a t i o n d o m a i n (6):

- S u s t a i n a b i l i t y
l e a d e r s h i p
- O r g a n i z a t i o n a l
r e s i l i e n c e
- E n t r e p r e n e u r s h i p

*C o n t e x t m a n a g e m e n t
d o m a i n (7):*

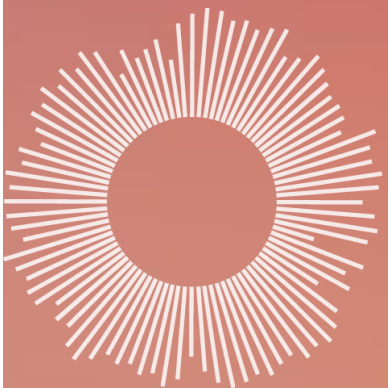
- A d v o c a c y

EXAMPLE: Leadership through the lens of net zero healthcare

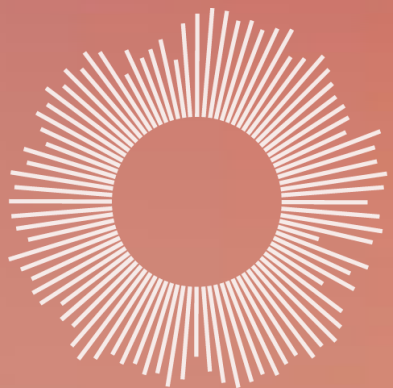


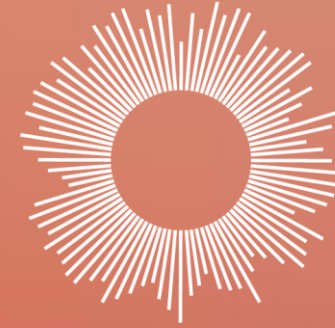
- **VALUES** Promote **environmental sustainability** commitment in the delivery of health services.
- **SELF-DEVELOPMENT** Understand your approach to leadership to continuously lead and inspire others.
- **EXECUTION** Educate yourself **on the impact of climate change on health care**. Implement the **identified processes** in an effective way, communicate the vision, objectives and priorities across the organization and to key stakeholders.
- **RELATIONS** Be a compassionate leader to engage the staff and stakeholders. Assess your stakeholders understanding of and commitment to **climate and health sustainability**.
- **TRANSFORMATION** Integrate **climate and health sustainability** into the overall organizational sustainability strategy.
- **TEAM MANAGEMENT** Establish an engaging culture and environment within your organization. Create relevant partnerships **for net zero health care**. Know the

W h a t w i l l
y o u d o ?



Q u e s t i o
n s a n d
D i s c u s s
i o n





Geneva
Sustainability
Centre



genevasustainabilitycentre.org



[geneva-sustainability-centre](https://www.linkedin.com/company/geneva-sustainability-centre)



[SustainGVA](https://twitter.com/SustainGVA)



[ihf.gsc](https://www.facebook.com/ihf.gsc)